



**LAND GRANT
HERITAGE + TIER
ONE LEADERSHIP**

Chancellor John Sharp

NEWS & POLITICS

Move Over, Austin: Fort Worth Is the New Texas Boomtown

The 2022 census update, released late last week, indicates that growth in Austin and Fort Worth—as well as the Texas suburbs—isn't slowing down.



By Dan Solomon

May 23, 2023



WHY FORT WORTH?

- One of the fastest growing cities in the nation, with a population in Tarrant County of 2.11 million and part of Dallas-FW Metro area of 8 Million.
- No Tier I research university presence in the county.
- Strong City and County backing for project.
- Demographic and workforce needs coupled with broad private sector interest.
- Law School is growing and needs new facilities to continue to grow and rise in rankings.
- Extensive research and workforce training partnerships with industry.
- Opportunity to centralize System regional operations (TDEM, TEES, TTI, TEEX etc.).
- TAM-FW will be the catalyst for a larger Innovation District on the southeast side of downtown Fort Worth.

THE TEXAS A&M UNIVERSITY SYSTEM

ORIGINAL VISION



- The Texas A&M University System (TAMUS), in partnership with the City of Fort Worth and Tarrant County, will transform a 3.7-acre site in Downtown Fort Worth into a mixed-use hub for education, innovation, and corporate collaboration.



- TAMUS envisions a new complex across four parcels that will house the Texas A&M University School of Law and other TAMUS members alongside private firms in a manner that encourages innovation and entrepreneurship within an urban research campus environment.

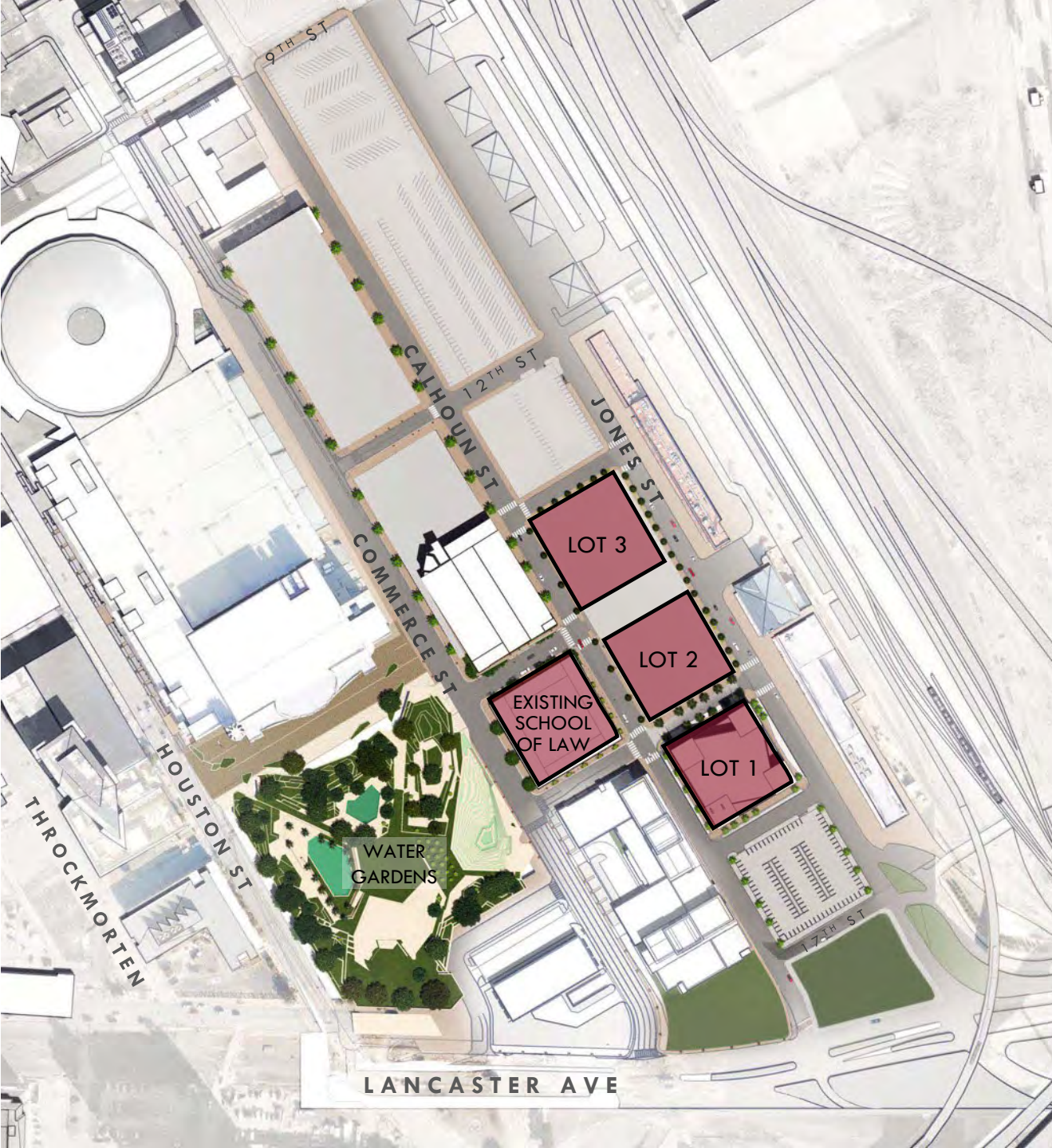


- The vision for this campus is to build a world-class facility for TAMUS members to be co-located with other complementary commercial tenants - ranging from startups to law firms to corporate partners – who can both benefit from the research, workforce and services stemming from the TAMUS members.



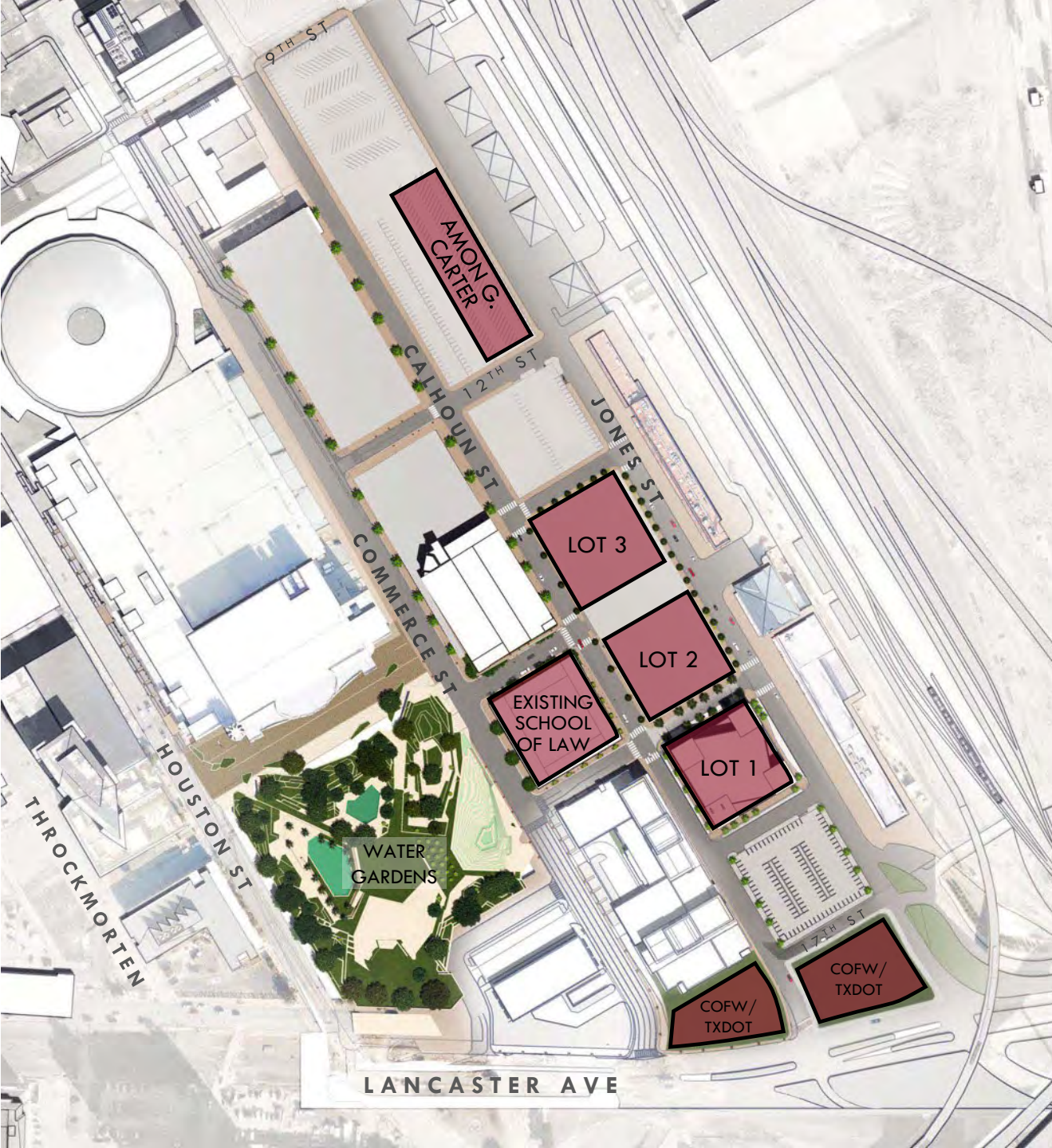
THE PLAN

Bobby Ahdieh



FORT WORTH PROPERTY

- Original configuration is 4 city blocks totaling 3.7 acres.
- From the original configuration, we are in the process of adding three additional parcels.

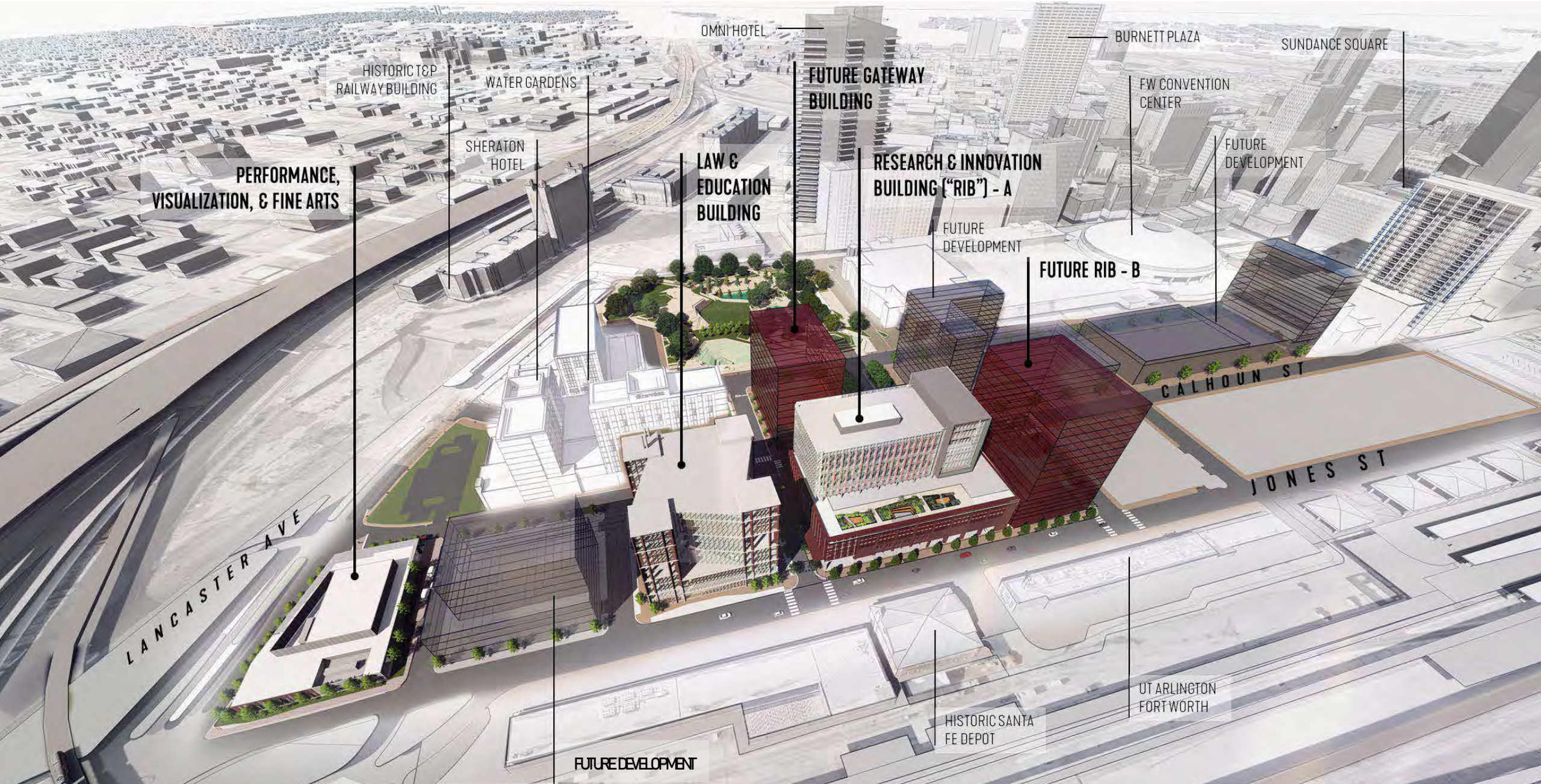


FORT WORTH PROPERTY

- Original configuration is 4 city blocks totaling 3.7 acres.
- From the original configuration, we are in the process of adding three additional parcels.
 - Amon G. Carter Foundation gift, 0.89 acres north of main campus
 - The City and TxDOT will transfer 1.29 acres at the corner of Lancaster and Calvert and Lancaster and Commerce
- Additions bring total available space to 7 city blocks and 5.8 acres.
- Further acquisitions are possible as part of the Innovation District zones envisioned by City planners.



PRE-DEVELOPMENT



PERFORMANCE,
VISUALIZATION, & FINE ARTS

HISTORIC T&P
RAILWAY BUILDING

WATER GARDENS

SHERATON
HOTEL

LAW &
EDUCATION
BUILDING

OMNI HOTEL

FUTURE GATEWAY
BUILDING

RESEARCH & INNOVATION
BUILDING ("RIB") - A

FUTURE
DEVELOPMENT

FUTURE RIB - B

BURNETT PLAZA

FW CONVENTION
CENTER

SUNDANCE SQUARE

FUTURE
DEVELOPMENT

LANCASTER AVE

CALHOON ST

JONES ST

FUTURE DEVELOPMENT

HISTORIC SANTA
FE DEPOT

UT ARLINGTON
FORT WORTH

POST-DEVELOPMENT



PROGRESS

Kim McCuiston



BUILDING 1: Law & Education

- Academic anchor
- Groundbreaking
 - Summer 2023
- Topping out
 - November 2024
- Substantial Completion
 - Summer 2026

Additional users:

- State Corporation Courts
- Mays School of Business
- College of Pharmacy
- Temporary: Burnet Plaza spillover

Current planned users:

- TAMU Law School
- TAMU College of Engineering
- TAMU Recruiting
- TAMU Health Science Center
- Tarleton Nursing
- Tarleton Biotech
- Tarleton Medical Lab Science
- TAM-FW Administration



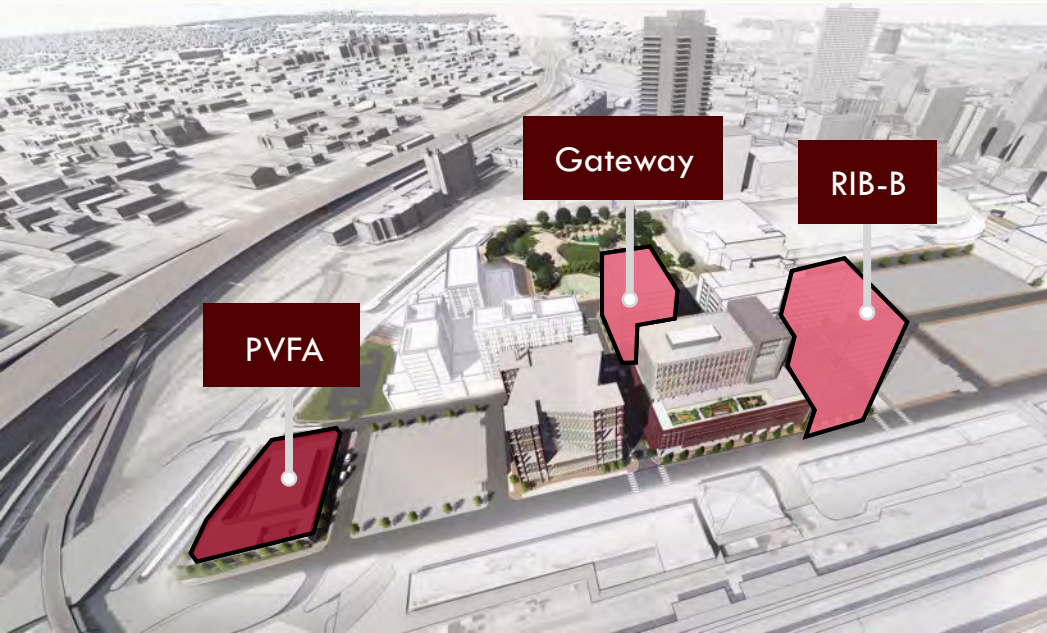




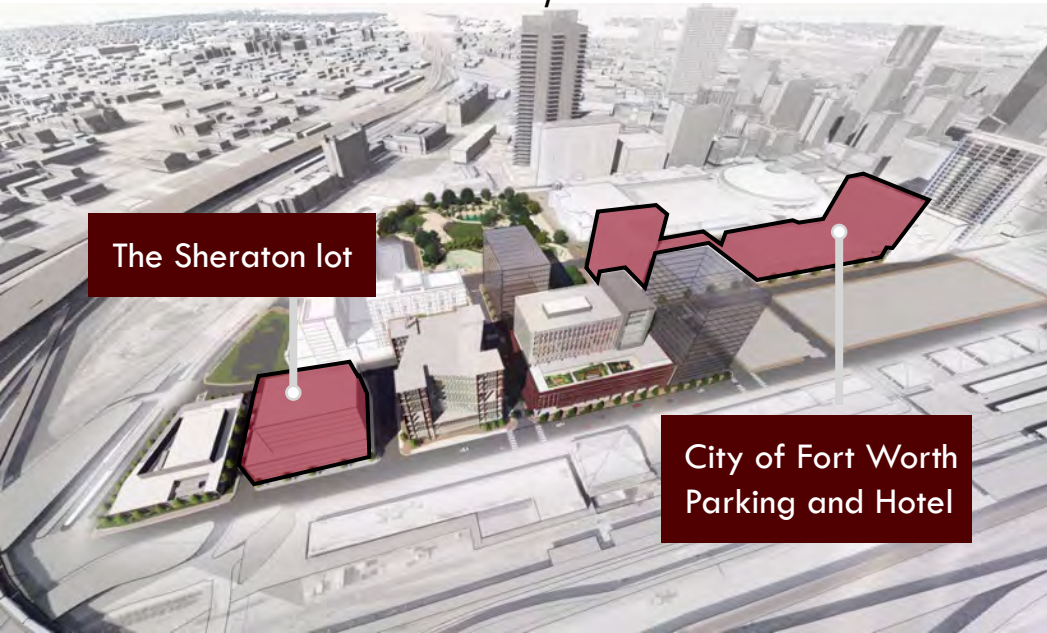
BUILDING 2: Research & Innovation

- Research and service anchor
- Currently in schematic design phase
- Projected TAMU System users:
 - TAMU School of Law
 - TAMU College of Medicine
 - TAMU College of Performance, Visualization & Fine Arts
 - Tarleton State University Biotechnology Institute
 - Tarleton State University Medical Lab Sciences
 - Texas A&M AgriLife Research
 - Texas A&M Engineering Experiment Station
 - Texas A&M Transportation Institute
 - Texas Division of Emergency Management
- Space set aside for ‘hub’ growth





OTHER NON-TAMFW FUTURE/POTENTIAL DEVELOPMENT:



FUTURE BUILDINGS

- **Performance, Visualization, and Fine Arts**
 - PVFA has an existing state appropriation for equipping the facility.
 - Classes are already underway in downtown
- **Research and Innovation Building - B**
 - Phase II of the Research and Innovation Building
 - Use will be primarily dictated by how demand develops as first buildings begin operations
- **Gateway**
 - Envisioned as the 'front door' and capstone of the Fort Worth campus, facing onto Commerce Street.
 - Potentially will include meeting and conference space with academic and other System Members offices.

VISUALIZATION LAB PLANNED SITE

PERFORMANCE,
VISUALIZATION,
& FINE ARTS

RESEARCH &
INNOVATION
BUILDING - A

LAW & EDUCATION
BUILDING





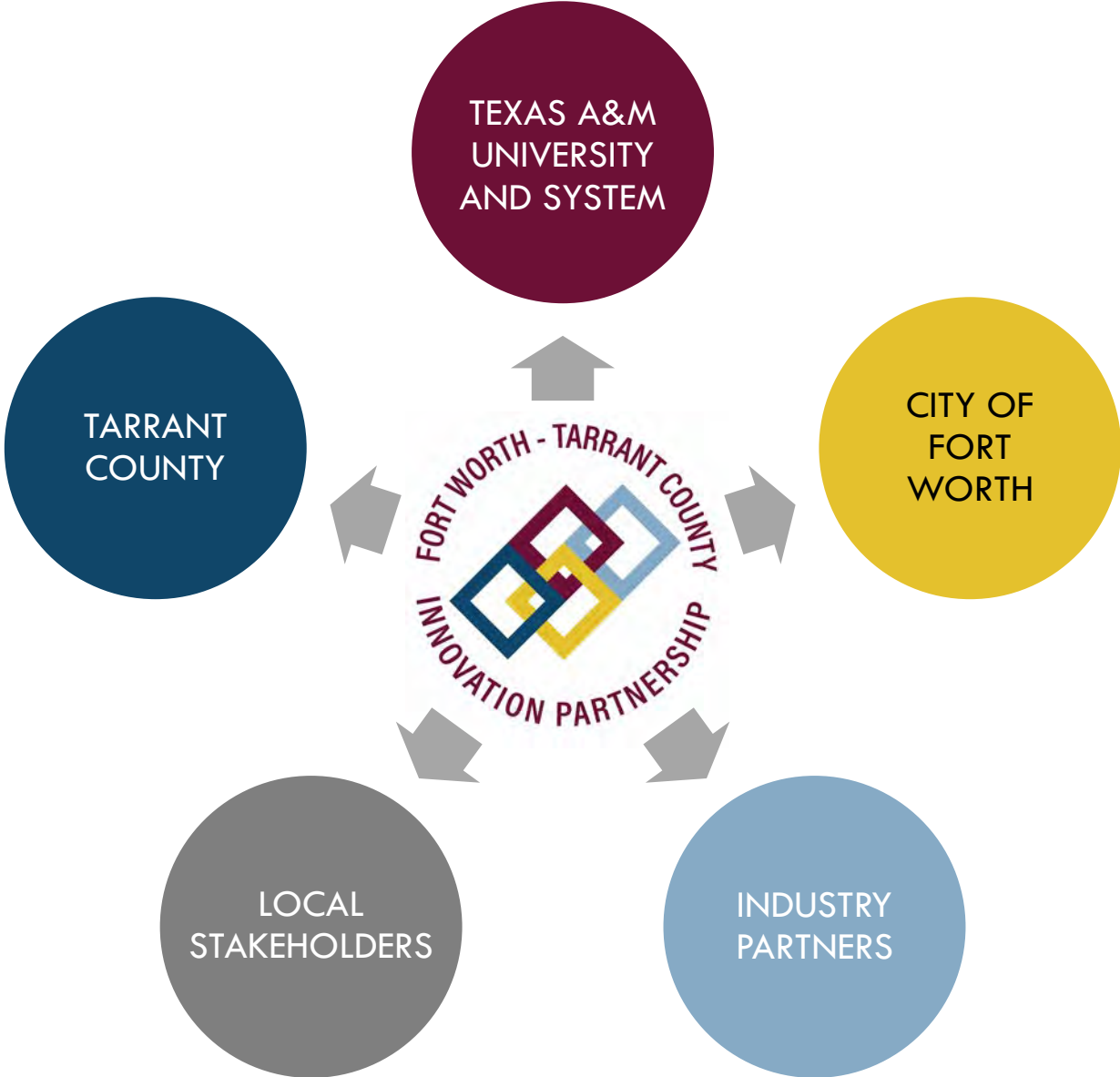
INNOVATION CONCEPTS & CORPORATE PARTNERSHIPS

Darryl Heath

FWTC INNOVATION PARTNERSHIP

The Fort Worth-Tarrant County Innovation Partnership (FWTCIP) was launched in February 2023.

- Created as a nonprofit partnership between the City of Fort Worth and Tarrant County to support the development and future success of Texas A&M Fort Worth
- Focused on driving innovative research, transformative education, and strategic alignment with industry partners.



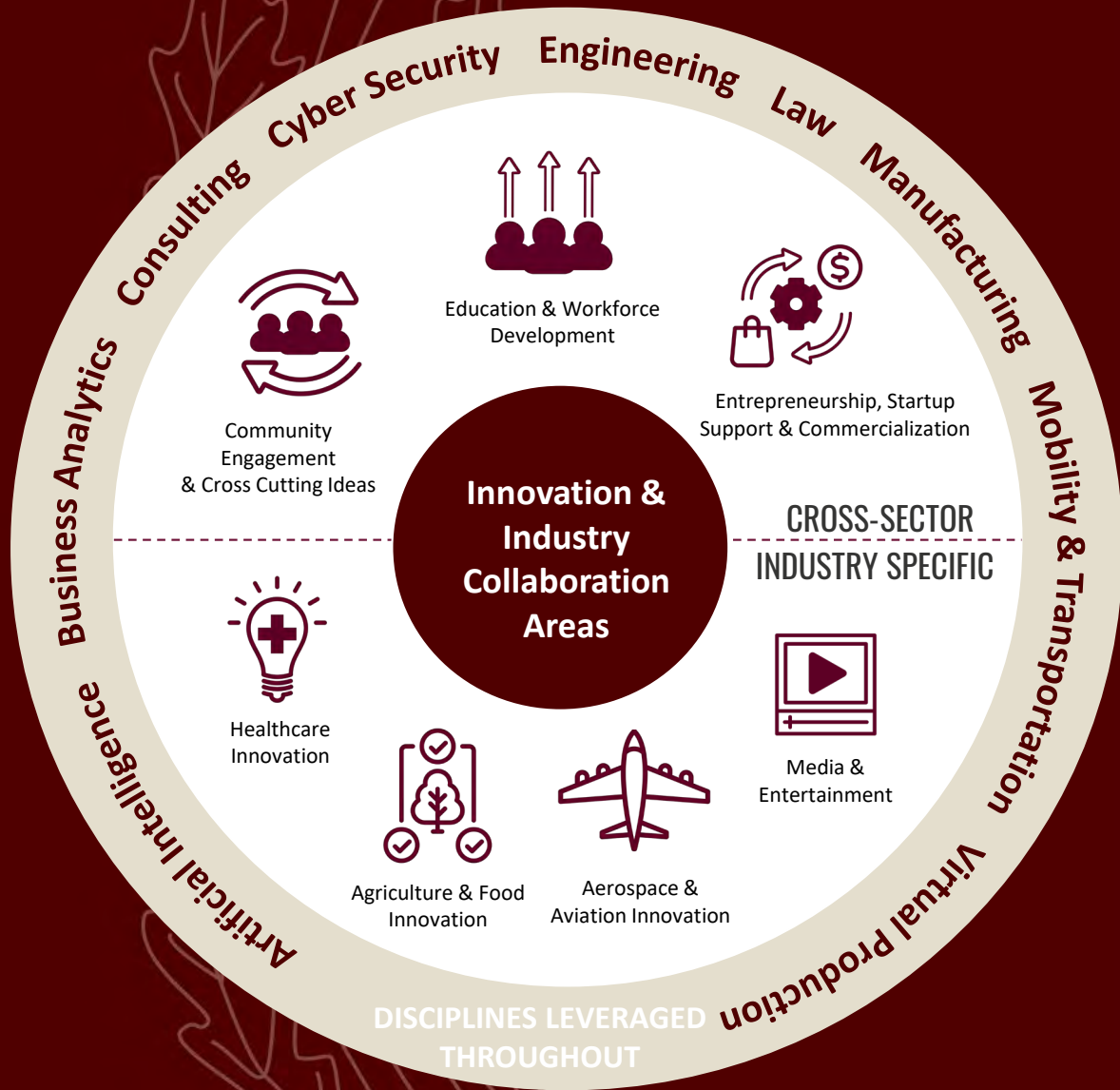
INDUSTRY HUBS

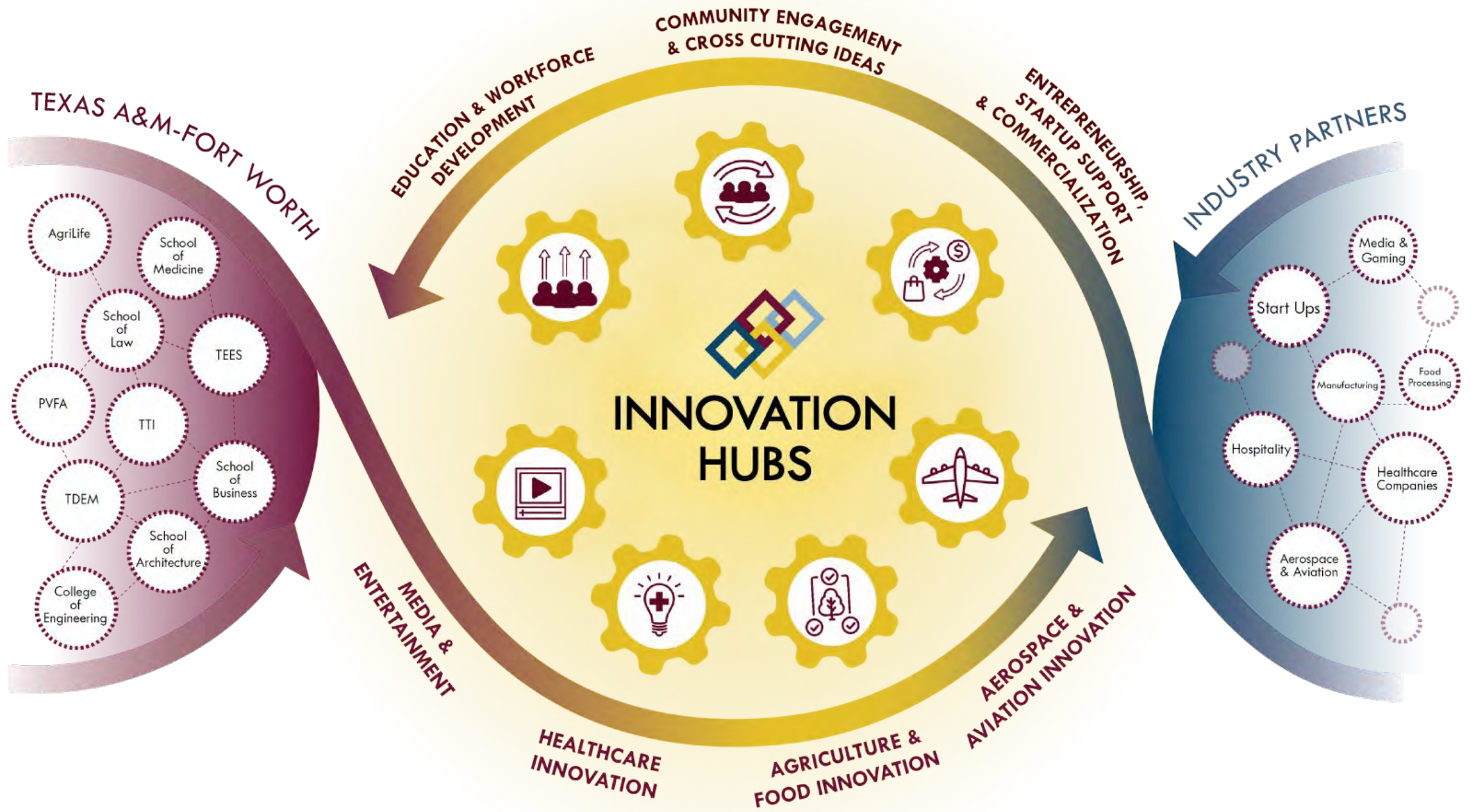
The Purpose:

- Dive deeper into opportunities that align needs of key industry partners in North Texas with the supply of research and talent from System Members

The Goal:

- Identify and build out several multi-disciplinary hubs that bring together industry and academic partners to solve complex problems
- And in the process, foster economic development and growth





Texas A&M—Fort Worth will be a multidisciplinary focal point for the DFW Metroplex combining academics and research with leading-edge industry partners and public agencies.

INDUSTRY OUTREACH

PARTNERS

INDUSTRY OUTREACH



