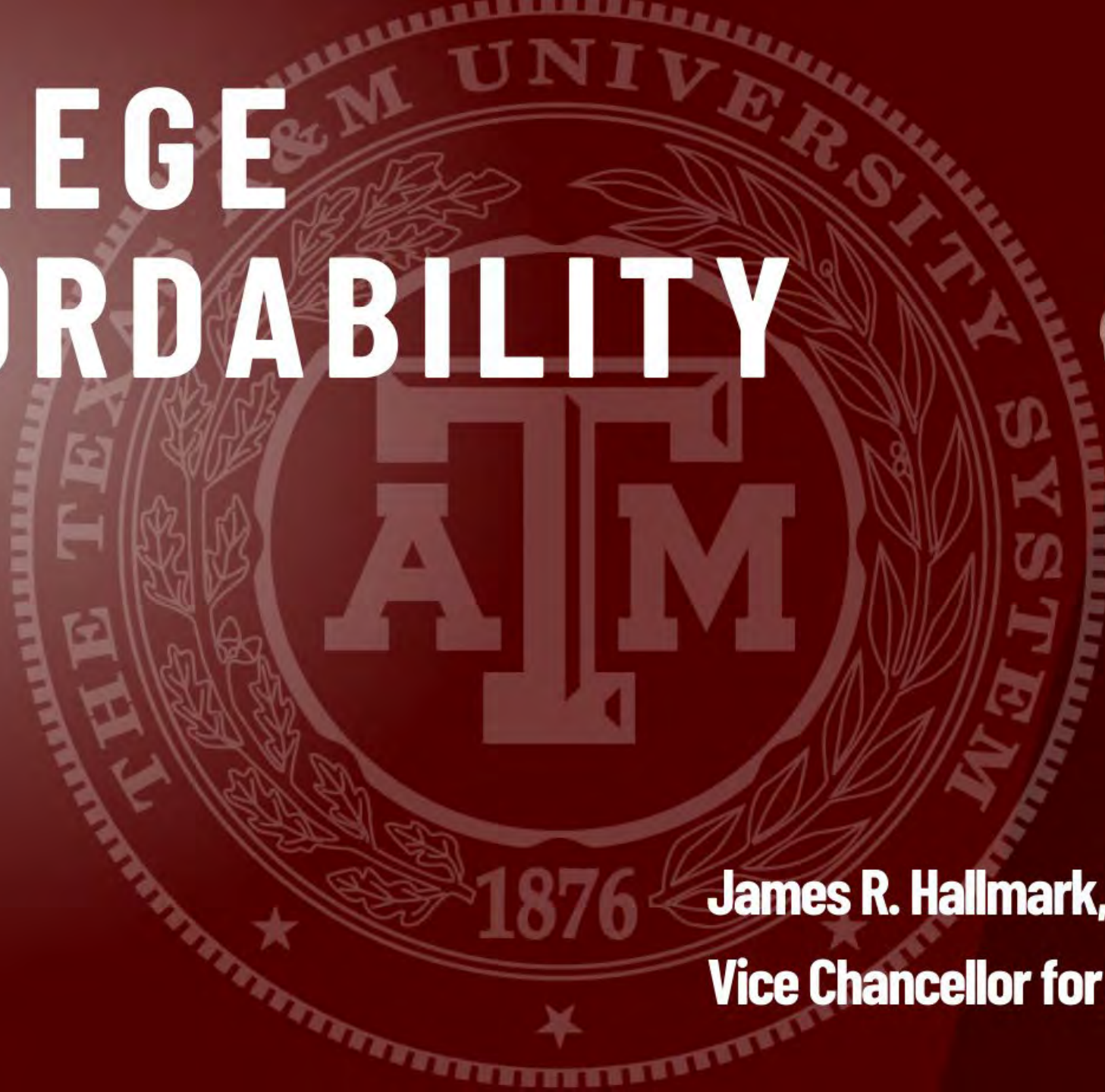


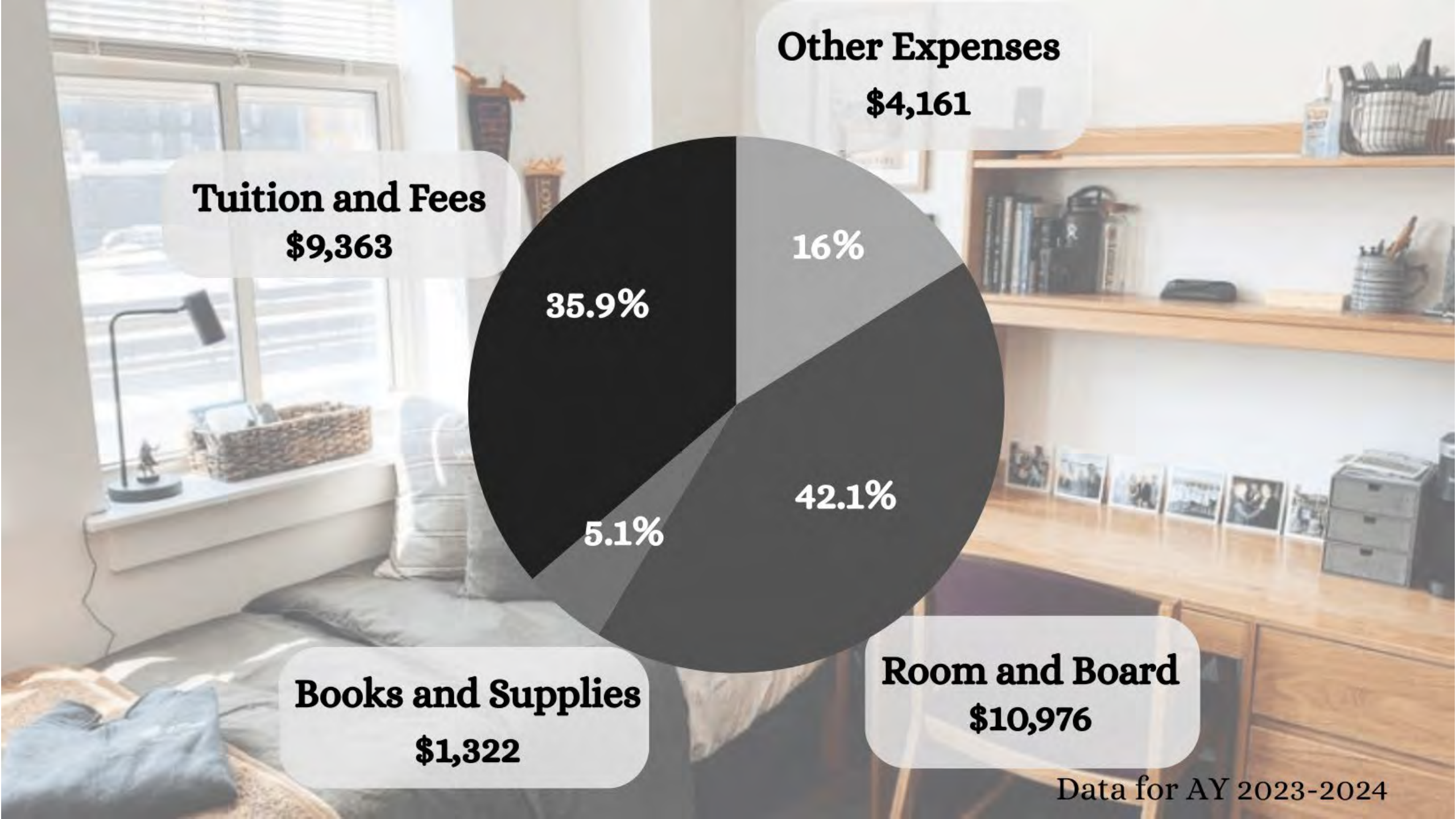
# COLLEGE AFFORDABILITY



**James R. Hallmark, Ph.D.**

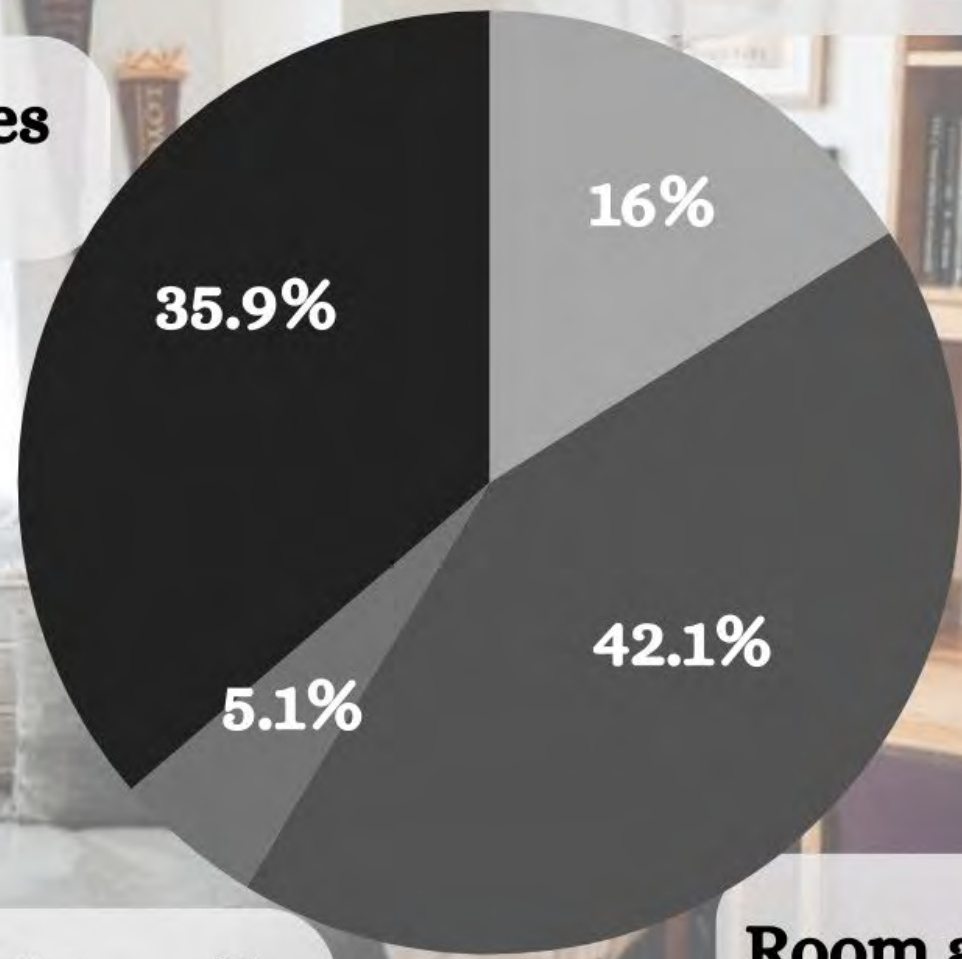
**Vice Chancellor for Academic Affairs**





**Other Expenses**  
**\$4,161**

**Tuition and Fees**  
**\$9,363**



**Books and Supplies**  
**\$1,322**

**Room and Board**  
**\$10,976**

Data for AY 2023-2024

# Tuition & Fees

**A&M System institutions  
received almost \$26 million  
in CRU funding for the  
2024-25 biennium**



# Books & Supplies

BARNES & NOBLE



# Room & Board

chartwells  
serving up happy & healthy

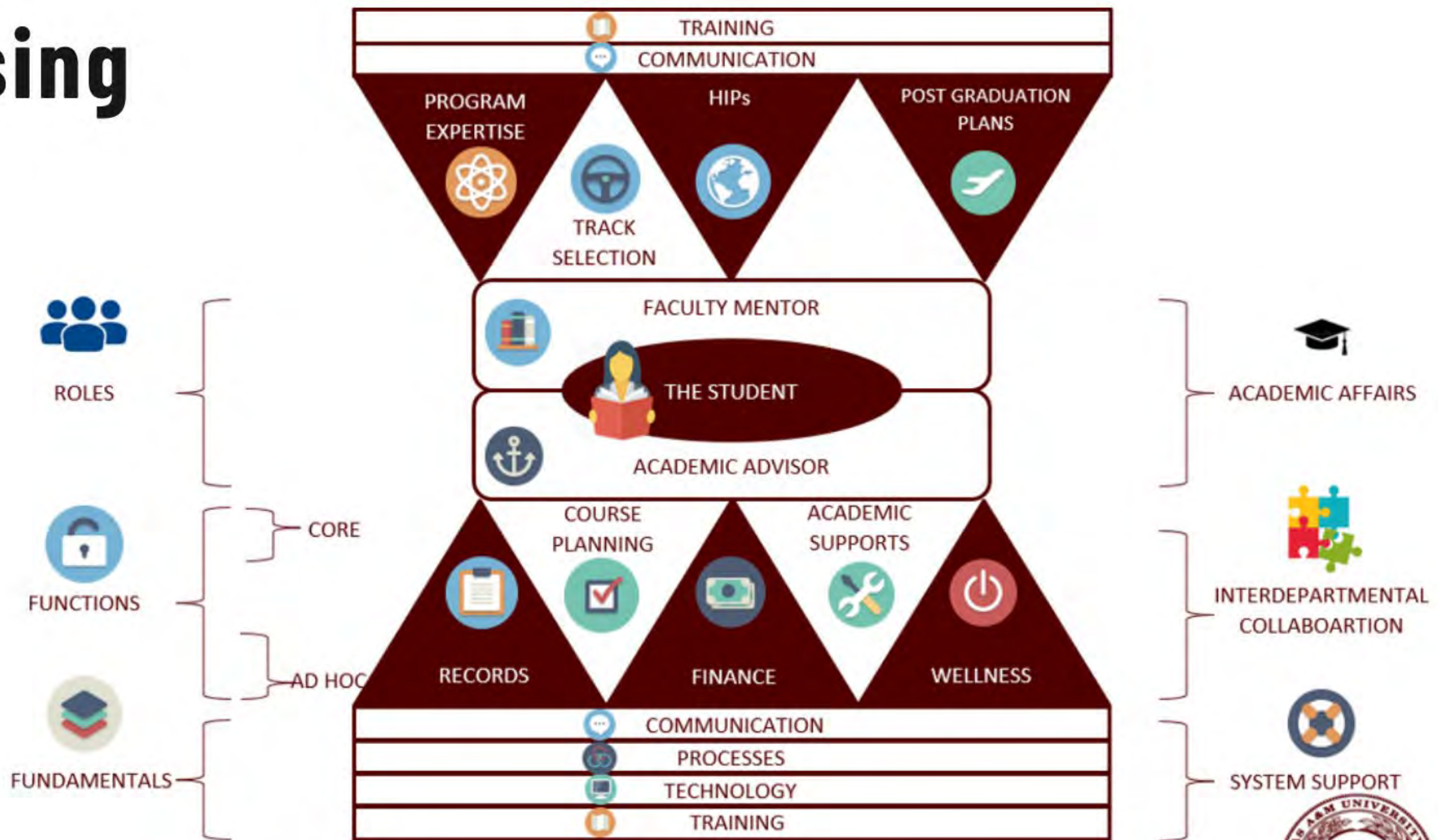
MARRIOTT  
BONVOY™

aramark 



AMERICAN  
CAMPUS  
COMMUNITIES

# Advising



# Jed Campus: Student Mental Health & Suicide Prevention

## UNIVERSITY & STARTING DATE

| PROGRESSION STEPS                 | East Texas | Tarleton OCT-23 | TAMIU JAN-24 | TAMU JAN-24 | TAMUG JAN 24 | TAMUK JAN-24 | TAMUT JAN-24 | TAMUCT AUG-24 | WTAMU AUG-24 | PVAMU AUG-24   | CC & SA JAN 25 |
|-----------------------------------|------------|-----------------|--------------|-------------|--------------|--------------|--------------|---------------|--------------|----------------|----------------|
| Committee Formed and Meeting      | ✓          | ✓               | ✓            | ✓           | ✓            | ✓            | ✓            | ✓             | ✓            | ✓              | In Progress    |
| Jed Baseline Assessment           | ✓          | ✓               | ✓            | ✓           | ✓            | ✓            | ✓            | ✓             | ✓            | ✓              | ✗              |
| Student Healthy Minds Study       | ✓          | ✓               | ✓            | ✓           | ✓            | ✓            | ✓            | March 24      | ✓            | ✓              | ✗              |
| Faculty/Staff Healthy Minds Study | ✓          | ✓               | ✓            | ✓           | ✓            | ✓            | ✓            | March 24      | ✗            | ✓              | ✗              |
| Site Visit                        | ✓          | ✓               | ✓            | ✓           | ✓            | ✓            | ✓            | June 2025     | April 21-22  | February 26-27 | ✗              |
| Feedback Report                   | ✓          | ✓               | ✓            | ✓           | ✓            | ✓            | ✓            | ✗             | ✗            | ✗              | ✗              |
| Strategic Planning                | ✓          | ✓               | ✓            | ✓           | ✓            | ✓            | ✓            | ✗             | ✗            | ✗              | ✗              |
| Strategic Plan - Year 1 Complete  | ✓          | ✓               | ✓            | ✓           | ✓            | ✓            | ✓            | ✗             | ✗            | ✗              | ✗              |

# Mental Health



**TEXT.CALL.CONNECT  
ANYTIME.ANYWHERE**

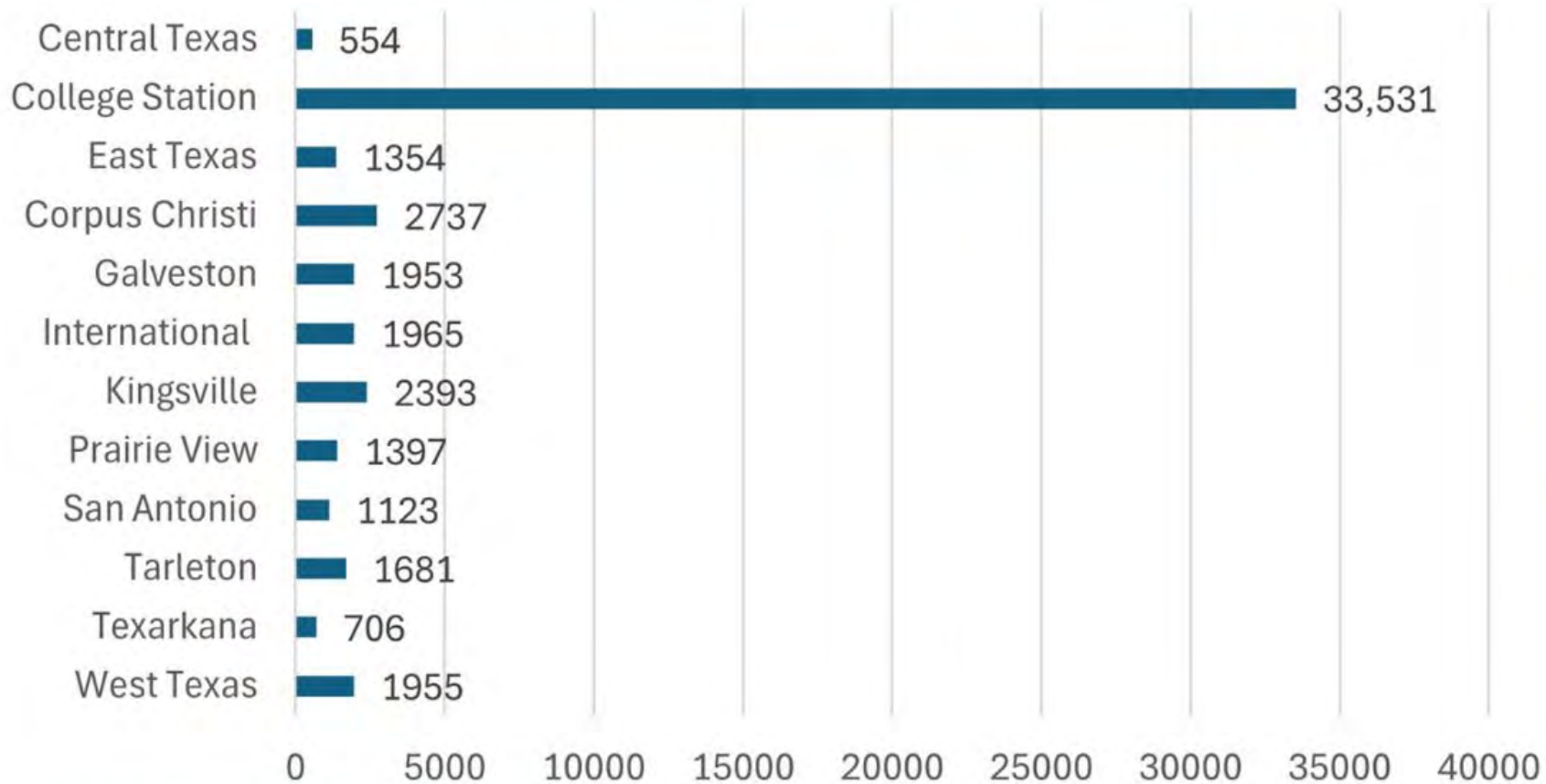
**WENT LIVE  
FEBRUARY 5, 2024**





# Telus Student Support Program

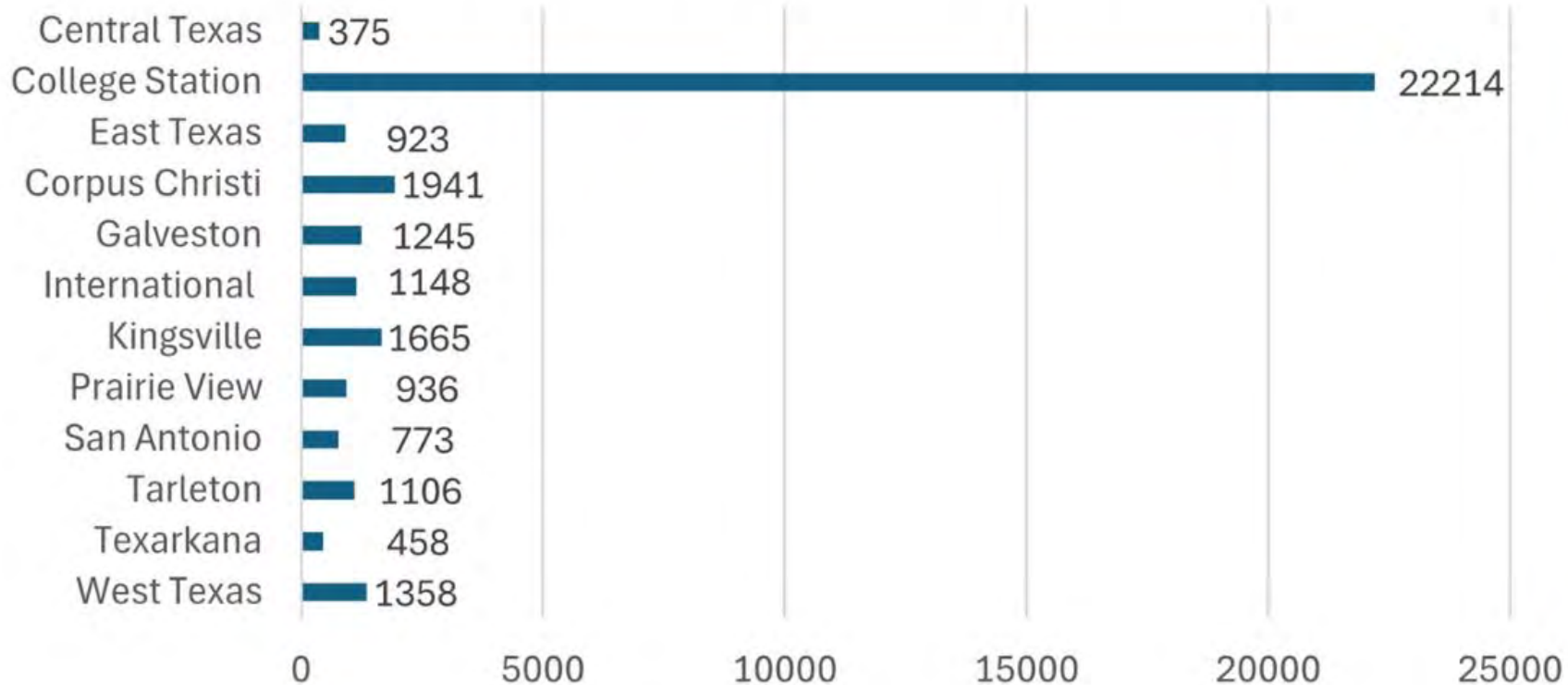
## Total Digital Users - 2024



**Total Digital Users - 51,349**

# Telus Student Support Program

## Re-Accessing Users - 2024

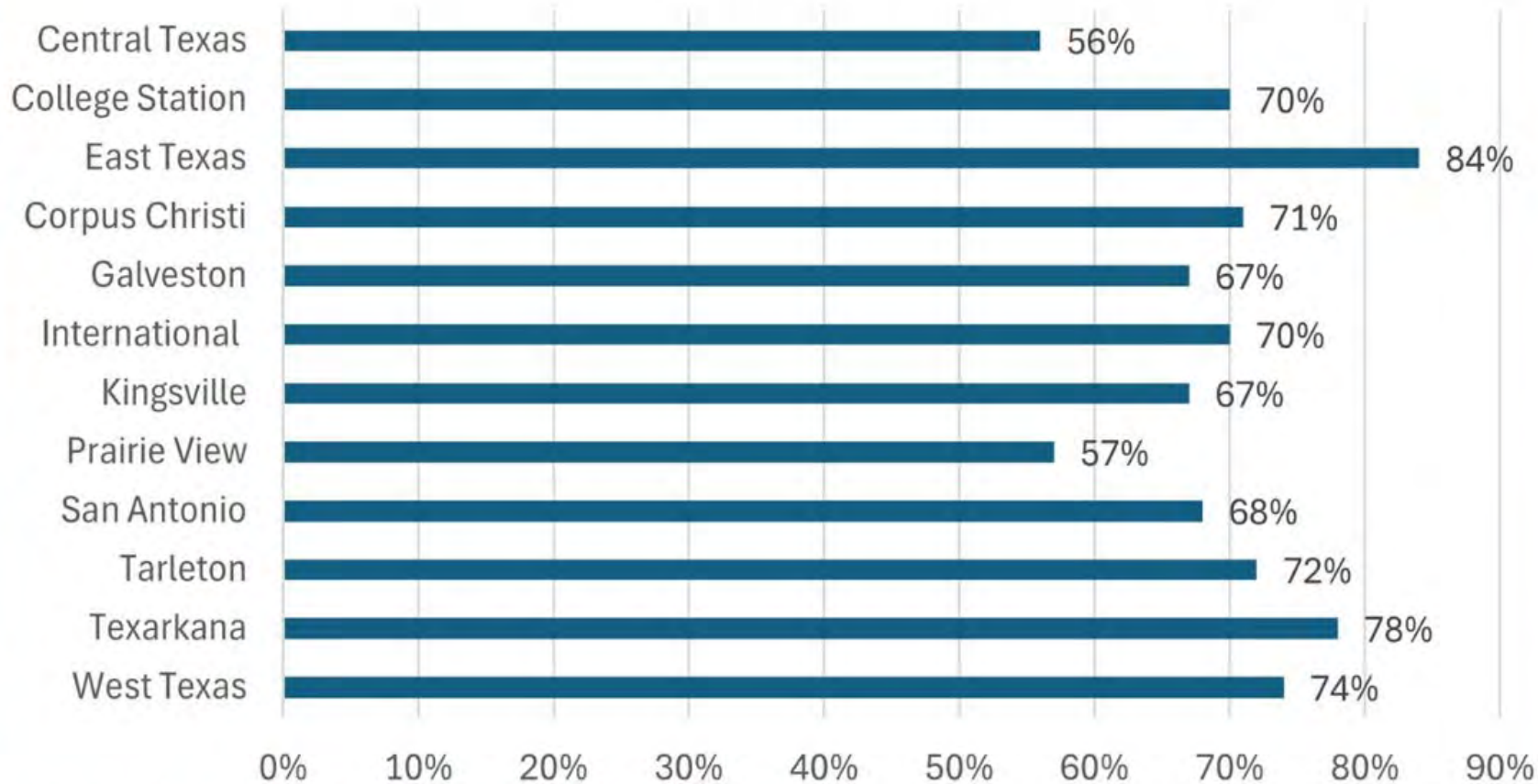


**Re-Accessing Users - Users accessing again, whether in the same or different reporting period.**

**Total number for TAMUS - 34,142**

# Telus Student Support Program

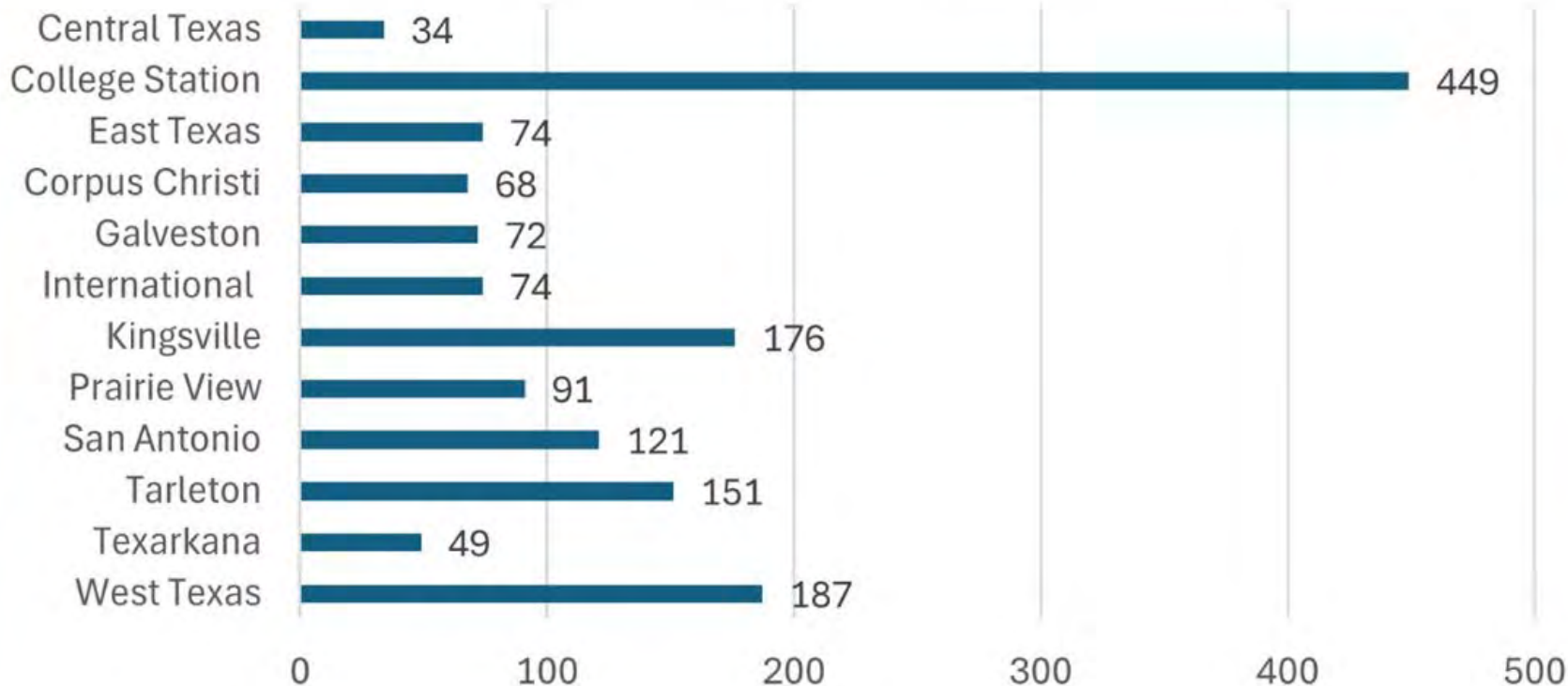
## Students Accessing After Hours - 2024



**Average Percentage for TAMU System - 70%**

# Telus Student Support Program

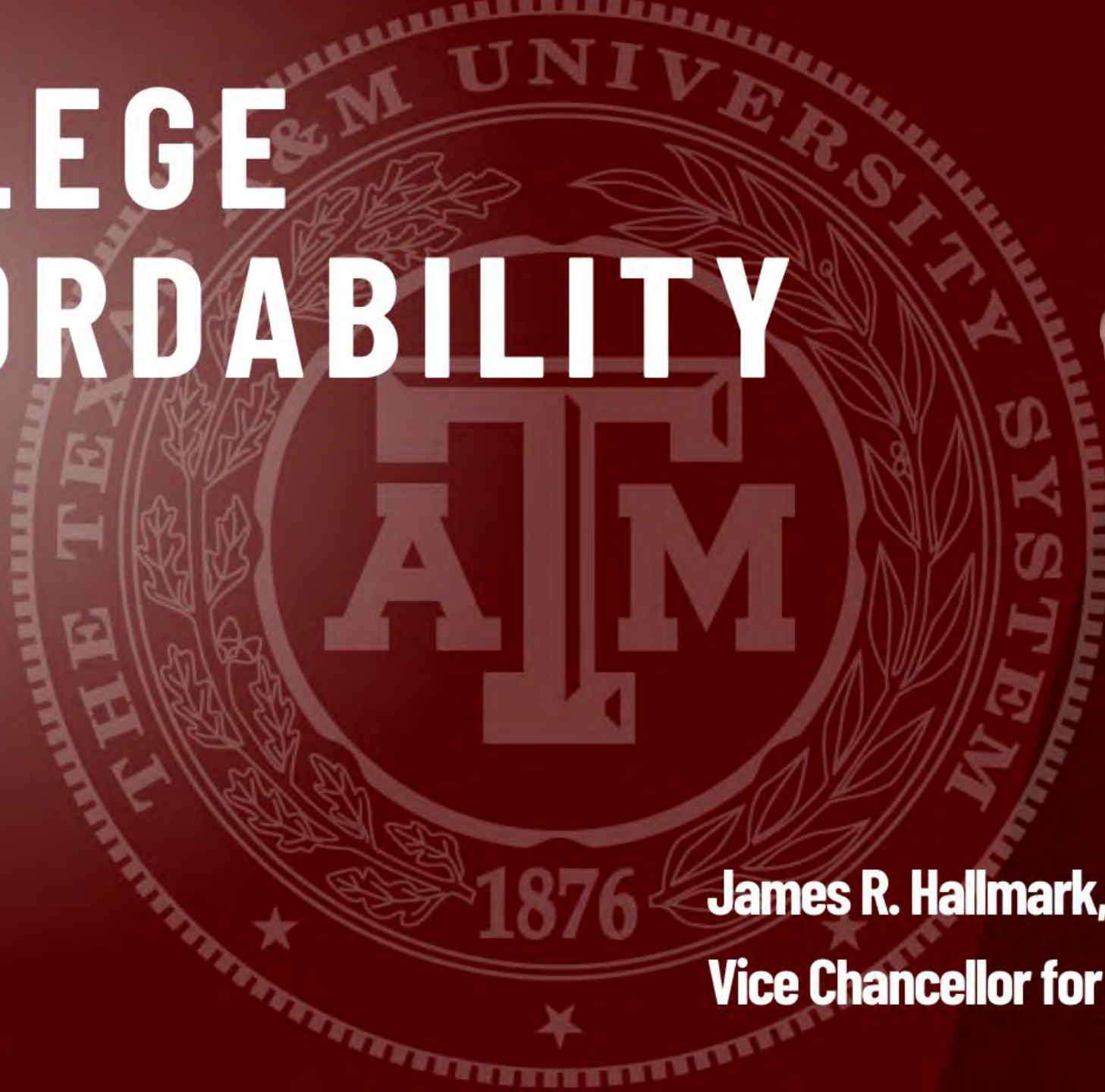
## Number of Clinical Activities - 2024



**Clinical Activity - A completed intervention that can occur during a single session in real time or over multiple sessions.**

**Total number for TAMUS: 1,546.**

# COLLEGE AFFORDABILITY



**James R. Hallmark, Ph.D.**

**Vice Chancellor for Academic Affairs**

