

# TEXAS A&M-RELLIS

Kelly Templin, Director

Friday, March 7<sup>th</sup>, 2025

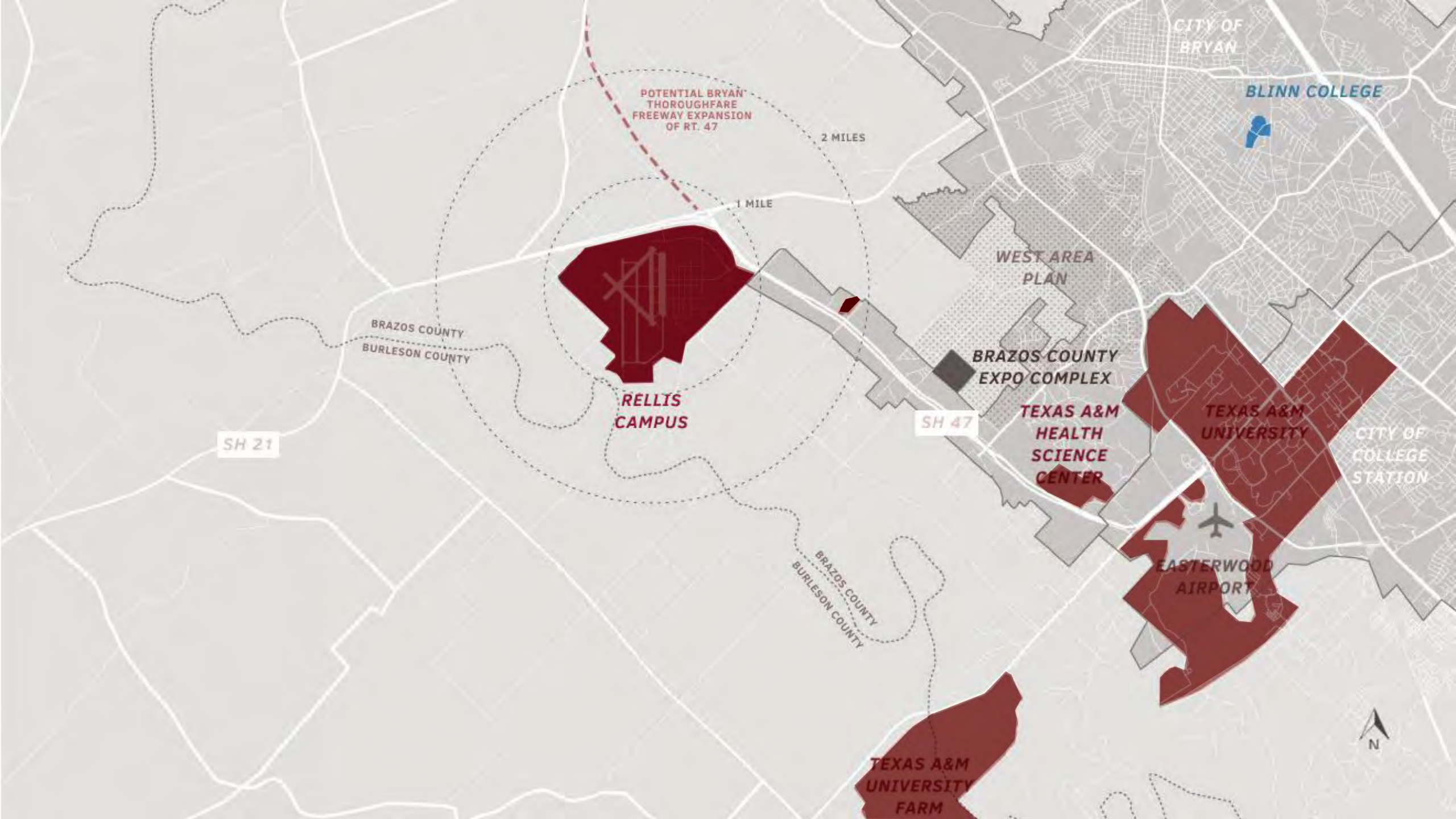


ATM

RELLIS

INNOVATION &  
TECH CAMPUS





CITY OF BRYAN

BLINN COLLEGE

POTENTIAL BRYAN THOROUGHFARE FREEWAY EXPANSION OF RT. 47

2 MILES

1 MILE

BRAZOS COUNTY  
BURLESON COUNTY

SH 21

RELLIS CAMPUS

WEST AREA PLAN

BRAZOS COUNTY EXPO COMPLEX

TEXAS A&M HEALTH SCIENCE CENTER

SH 47

TEXAS A&M UNIVERSITY

CITY OF COLLEGE STATION

EASTERWOOD AIRPORT

BRAZOS COUNTY  
BURLESON COUNTY

TEXAS A&M UNIVERSITY FARM





# BRYAN ARMY AIR FIELD

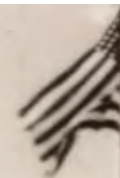
RESPECT EXCELLENCE LEADERSHIP LOYALTY INTEGRITY SELFLESS SERVICE

MAIN GATE

*Bryan Army Air Field, Texas*

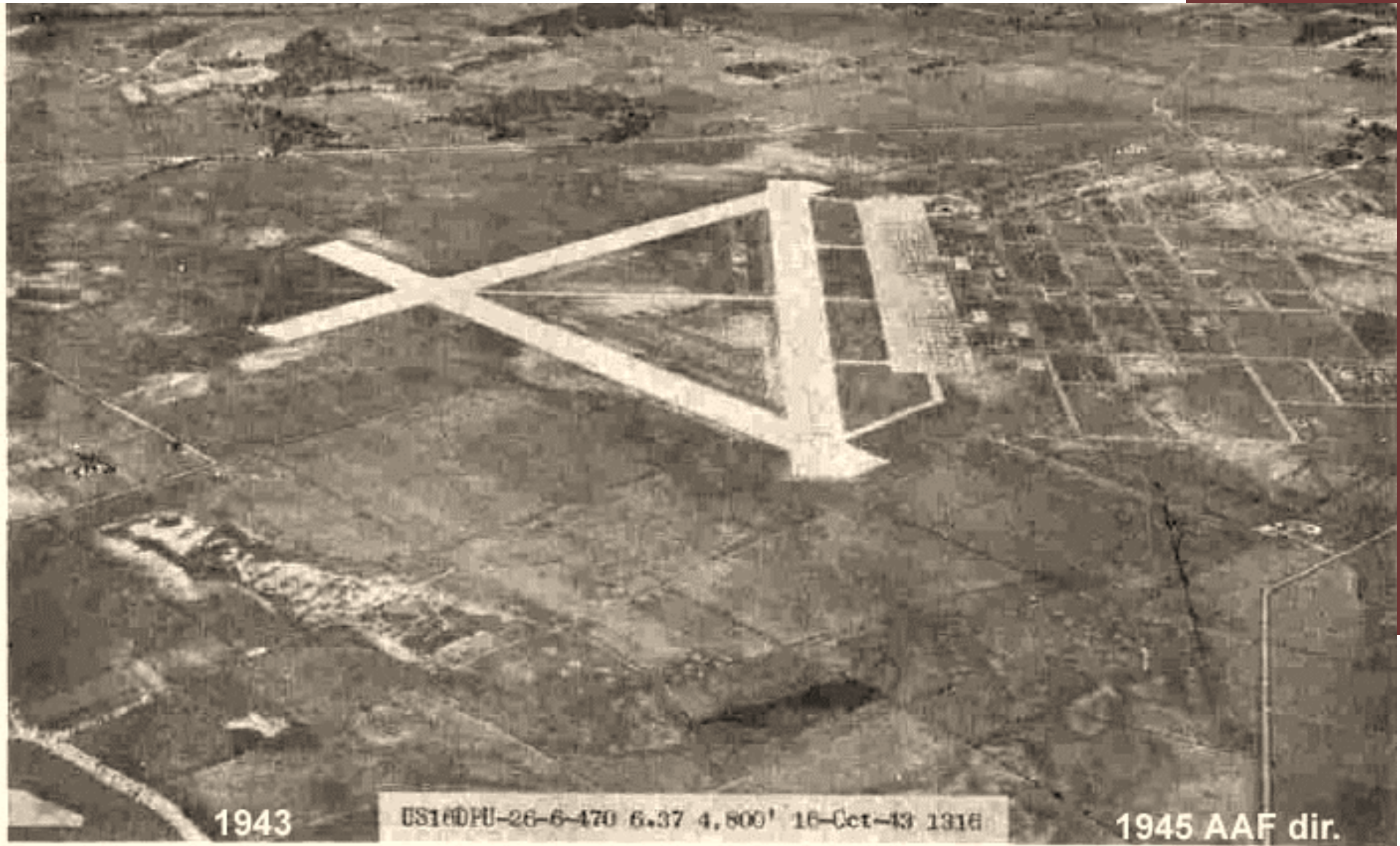


Bryan Army Air Field, Texas





# BRYAN ARMY AIR BASE, circa 1945



1943

ES160PU-26-6-470 6.37 4,800' 16-Oct-43 1316

1945 AAF dir.



*Bryan Army Air Field, Texas*

# OUR HERITAGE

**BRYAN ARMY AIR BASE**

---

**THE ANNEX**

---

**BRYAN AIR FORCE BASE**

---

**RIVERSIDE CAMPUS**

---

**THE RELIS CAMPUS**







# OUR GROWTH

Over 1M SF OF NEW & RENOVATED FACILITIES

---

SEVEN ENGINEERING RESEARCH OFFICE AND  
LABORATORY FACILITIES

---

FOUR NEW EDUCATION CENTERS;  
ONE UNDERWAY

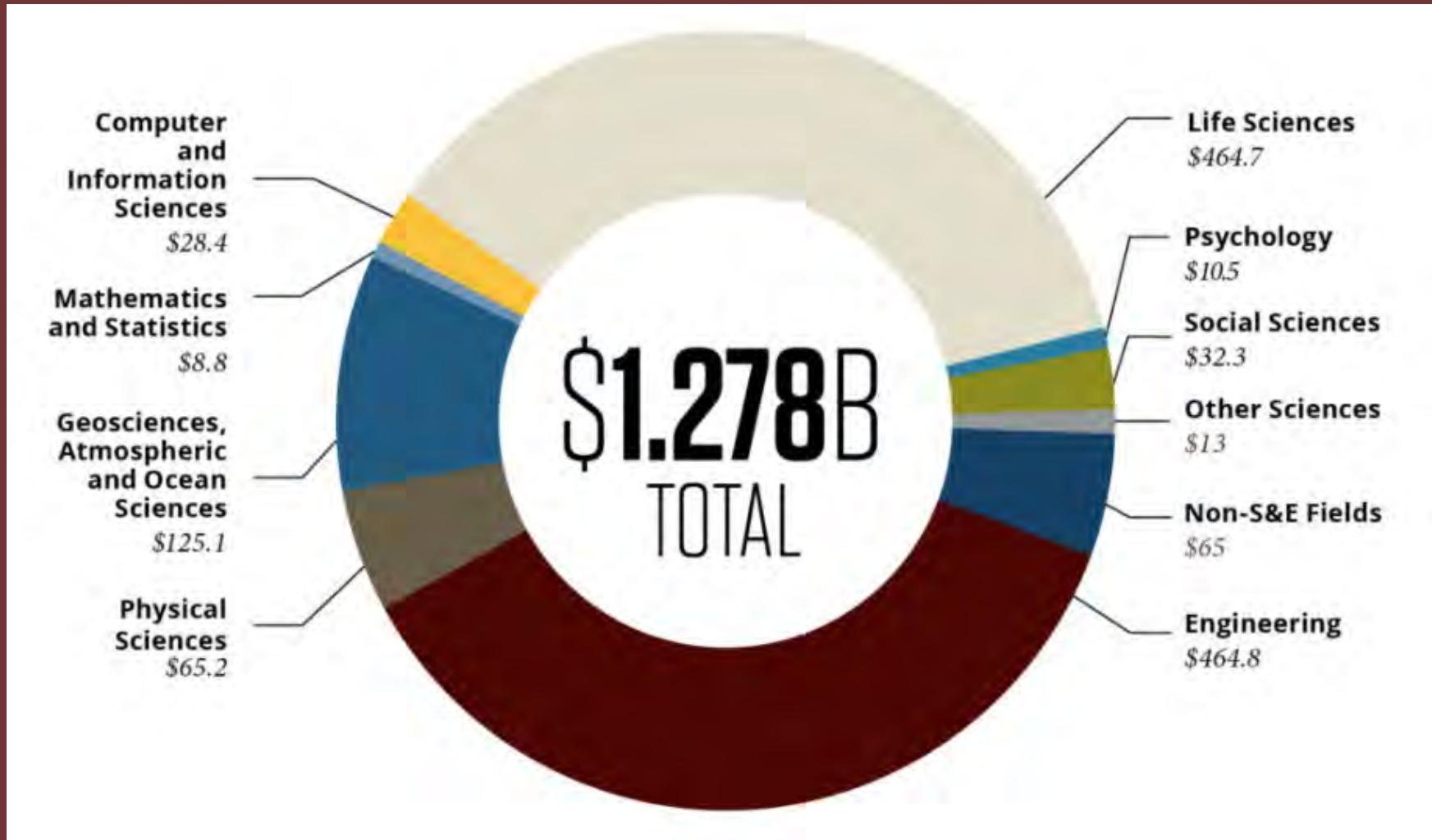
---

IMPROVEMENTS AND UPGRADES  
OF CURRENT TEST GROUNDS

---

MAJOR IMPROVEMENTS TO THE CAMPUS  
INFRASTRUCTURE

# TEXAS A&M RESEARCH EXPENDITURES\*



\* 2023 (# 1 IN TEXAS, #6 AMONG US PUBLIC UNIVERSITIES)



# Center for Infrastructure Renewal (CIR)





# Texas A&M Transportation Institute (TTI)







# Research Integration Center (RIC)

George H.W. Bush Combat  
Development Complex





### Texas A&M Blazes Trail in Semiconductor Education and Training

Texas A&M Engineering and the Texas A&M Semiconductor Institute to launch multiple programs and initiatives to bolster the semiconductor industry.  
April 16, 2024 | By Texas A&M Engineering

[Campus Community](#) [Chemical Engineering](#) [College of Engineering](#) [Electrical and Computer Engineering](#)

[Featured](#) [Materials and Manufacturing](#) [Texas A&M Engineering Experiment Station \(TEES\)](#)

# Texas Semiconductor Institute (TSI)



# Small Modular Nuclear Reactors

## Four SMR developers aim to build reactors at Texas A&M University site

Wednesday, 5 February 2025

Kairos Power, Natura Resources, Terrestrial Energy and Aalo Atomics have signed agreements to bring their reactors to Texas A&M-RELLIS, a 2400-acre technology campus in Bryan in Texas in the USA.




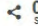
# Small Modular Nuclear Reactors



## Texas A&M University System To Bring Nuclear Reactors To Texas A&M-RELLIS

*The initiative aims to enhance Texas' power grid and support technological growth with advanced nuclear energy solutions.*

By Texas A&M University System • MAY 29, 2024

SHARE    0 SHARES



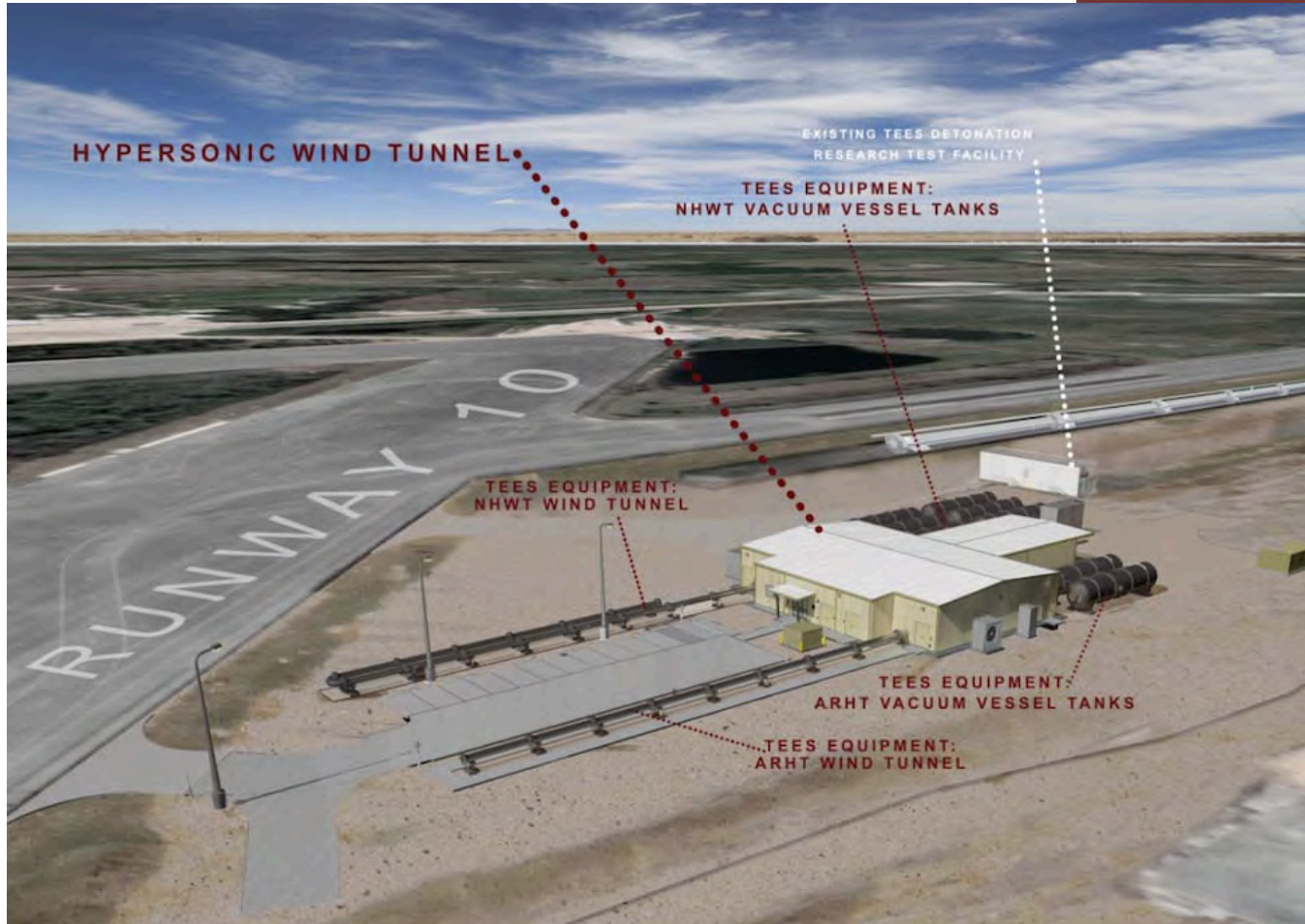


GEORGE H.W. BUSH COMBAT DEVELOPMENT COMPLEX

# Ballistics, Aero-Optics Materials Facility (BAM)



# Hypersonic Wind Tunnel



[Home](#) / [Capabilities](#) / [Research](#) /

## Texas A&M-RELLIS home to hypersonic testing research

August 30, 2022

**HYPERSONIC TESTING IN SIGHT AFTER TEXAS A&M, BUSH COMBAT DEVELOPMENT COMPLEX RECEIVE INFRASTRUCTURE**

**“This is about saving American lives. These lives of American soldiers. It’s about protecting our national interest here in the United States.”**





# TEEX Drive Track & Training Grounds





# Animal Reproductive Biotechnology Center



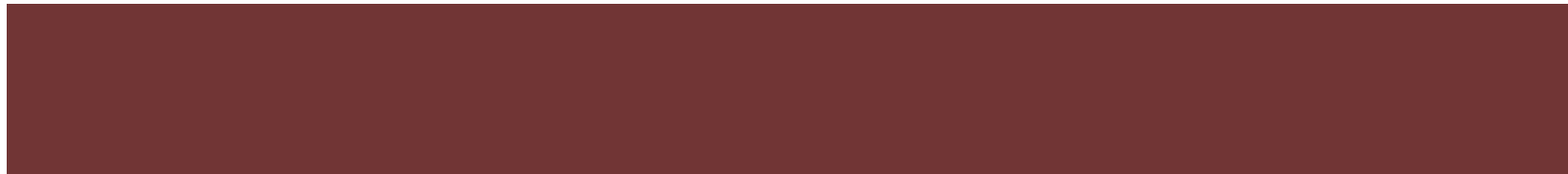
# STEM Education Building







**Data Center**





# Industrial Distribution Building







**Rosenthal Meat Science Center**





QUESTIONS?

